

EFDM Series – EasyHang™ Rubber Grommet Ceiling Mounts

General Description

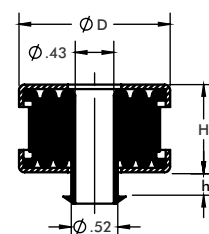
The EFDM Series EasyHang™ Ceiling Mounts are engineered rubber grommet isolators designed to control vibration and structure-borne noise in suspended ceiling and service installations. These compact and economical vibration mounts are ideal for isolating low-frequency vibrations typically generated by mechanical and electrical systems mounted above ceilings.

Constructed from durable, high-durometer elastomer and equipped with a molded collar, the EFDM units prevent metal-to-metal contact, significantly improving noise attenuation performance in ceiling-mounted systems. Their low-profile design allows for seamless integration into tight spaces like plenum ceilings or above finished ceilings in commercial and institutional settings.



Key Features

- **Effective Vibration Isolation:** Designed to reduce the transmission of vibration and noise from suspended systems into the building structure.
- **Non-Metallic Contact:** Integrated rubber collar ensures no metal-to-metal bridging for enhanced acoustic performance.
- **Compact Design:** Ideal for applications with low clearance or tight installation spaces.
- **Cost-Effective:** Economical alternative to steel spring or neoprene ceiling hangers for light-to-moderate load applications.
- **Quick Installation:** Pre-assembled units with straightforward mounting simplify on-site labor and reduce installation time.



Typical Applications

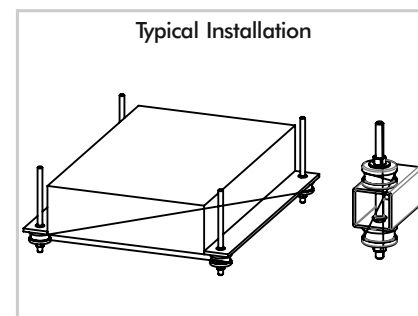
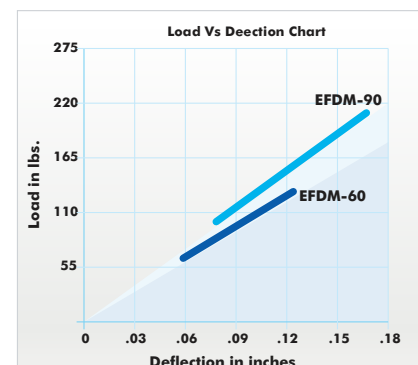
- HVAC fan coil units and terminal boxes
- Fans & Blowers
- Suspended ductwork and piping in ceiling plenums
- Electrical conduit trays and cable management systems
- Acoustic ceiling grids and overhead lighting fixtures
- Audio-visual equipment mounts in commercial spaces

The EFDM mounts are particularly well-suited for:

- Office buildings
- Hospitals and healthcare facilities
- Educational institutions
- Retail and hospitality environments

Technical Specifications

Model	Maximum Load (lbs)	Deflection at Max Load (in)	Dimensions in inches			Color
			D	H	h	
EFDM-60	132	0.12	1.25	0.75	0.20	Black
EFDM-90	198	0.18	1.68	1	0.25	Black



Installation Guidelines

- Position the EFDM grommet between the suspension rod and the mounting surface.
- Ensure the rubber collar is seated fully within the mounting hole to maintain proper vibration isolation.
- Avoid over-tightening the fastener to prevent crushing the elastomer element, which could reduce performance.
- Verify load capacity per mount and distribute system weight evenly to maintain specified deflection.
- For optimal acoustic results, install mounts symmetrically and use in conjunction with flexible connections for HVAC or piping systems.

- British Standards, BS 3974 : Part I
- Due to policy of continual improvement, the specifications are subject to change without prior notice.
- Measurements are subject to 5% tolerance.
- To achieve good sound suppression do not over load fitting.