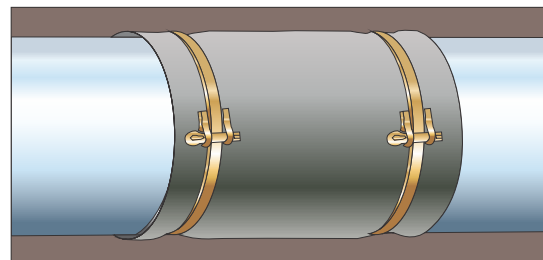
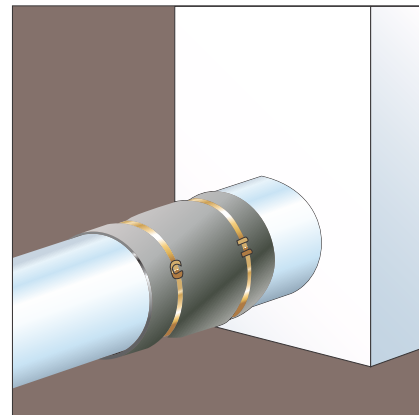


## Introduction

In order to isolate vibrations caused by air handling units, fans or other equipment connected to air ducts, it is highly recommended to install a flexible connector joint between the outlet of these devices and the airduct. It is necessary to select an airtight and flexible cloth, with good weathering qualities and one which will withstand the temperatures inside and outside the duct. Duct being generally made of steel, the main difficulty is to fasten the cloth to it in order to obtain a perfectly airtight joint.

Easyflex circular straight sleeve connectors are perfect for this job.

The circular straight sleeves can be produced for any diameter, They are made from Polyurethane cloth strips (M0 and 400°C/2h classified) 6.30" wide and the ends are sewn with a strong, high-temperature thread. Each sleeve is supplied with two suitable clamps. Assembly takes place by sliding the sleeve over the external diameter of the circular duct and its matching part and clamping each end. This is simple and efficient and affords perfect airtightness.



## Fabric

- Glassfiber coated with polyurethane on both sides
- Fire resistance : M0 and 400°C/2h
- Sewn with high temperature thread
- Other fabrics available on request

## Fastening bands

- Galvanised steel strip
- Thickness : 0.02"
- Width : 0.31"
- Length of the steel bands : (perimeter of the sleeve x2) + 5cm
- Security clamp with " Cotter Pin Fastening "

## Packaging

- Individual bags with one circular straight sewn fabric sleeve finished to required size and two fastening clamps with fasteners
- Sold in cartons of 10 individual bags (5 bags for diameters over 36")

# Easyflex<sup>TM</sup>

## Circular Straight Sleeves

Vw VibraSystems

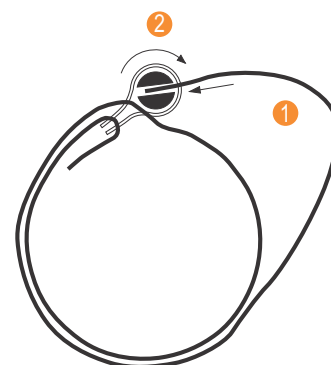
The nominal diameter correspond to standard nominal duct diameters.

The actual diameter of the circular straight sleeve is slightly larger to enable the sleeve to be slid on the ducts.



Nominal diameter	Width	Code	Description
5"	6.3"	121125	MAN160 - Ø 125
6.3"	6.3"	121160	MAN160 - Ø 160
8"	6.3"	121200	MAN160 - Ø 200
10"	6.3"	121250	MAN160 - Ø 250
11.02"	6.3"	121280	MAN160 - Ø 280
12.4"	6.3"	121315	MAN160 - Ø 315
12.98"	6.3"	121355	MAN160 - Ø 355
16"	6.3"	121400	MAN160 - Ø 400
18"	6.3"	121450	MAN160 - Ø 450
20"	6.3"	121500	MAN160 - Ø 500
22.05"	6.3"	121560	MAN160 - Ø 560
24.8"	6.3"	121630	MAN160 - Ø 630
27.95"	6.3"	121710	MAN160 - Ø 710
32"	6.3"	121800	MAN160 - Ø 800
36"	6.3"	121900	MAN160 - Ø 900
40"	6.3"	122000	MAN160 - Ø 1000
44.09"	6.3"	122120	MAN160 - Ø 1120
50"	6.3"	122250	MAN160 - Ø 1250

### Method of application



- Roll the steelband twice passing underneath the axle and leave 3 to 4 cm slack
- Insert the steelband in the axle and turn it clockwise until the slack has disappeared

Other sizes on request.

Other fabrics on request.

### Fabric only

Easyflex can also supply its range of fabrics only pre-cut to any desired width.

